

# Asian Breeze (56)

(亜細亜の風)

A Happy New Year to you!

1 February 2018

Dear Coordinators and Facilitators in Asia/Pacific region. It might not be too late to say “A Happy New Year of 2018!”, since Chinese New Year of 2018 begins on February 16 (Friday), 2018.

Chinese New Year is based on lunar calendar which differs from the Gregorian calendar. It is also known as the Spring Festival. Every year is represented by a zodiac animal sign. 2018 is a year of Dog. Dogs symbolize character traits such as loyalty, compatibility and kindness. Dogs frequently offer kind words and useful advice, always

listening and lending a shoulder when necessary. Dogs often become deeply involved in others' lives and are sometimes perceived as nosy. Ensuring others are happy is more important to the Dog than wealth, money or success. Dogs are determined individuals; always wanting to master a new subject before moving on and always finishing what they start. Dogs value friendships; they're loyal, honest, trustworthy and reliable and have strong morals and ethics.

If you were born in 1934, 1946, 1958, 1970, 1982, 1994 and 2006, then you are dog. Does the above statement represent your character correctly?

For this issue, I have received a wonderful contribution from Mr. Mohd Arif Jaafar, head coordinator of NSCM (National Slot Coordination Malaysia) featuring Kuala Lumpur International Airport. I hope you will find it interesting.



## Kuala Lumpur International Airport (KUL)

Kuala Lumpur International Airport (KLIA) (IATA: KUL, ICAO: WMKK) is the premier gateway to Malaysia and one of Asia's major aviation hubs. It is located at the top of the southern corridor of Peninsular Malaysia, bordering the states of Selangor and Negeri Sembilan. Situated in the Sepang district, it is approximately 50km from the capital city, Kuala Lumpur. Surrounded by four main cities – Kuala Lumpur, Shah Alam, Seremban and Malacca – the airport

is a catchment area that offers exciting opportunities for business. It is easily accessible via a network of highways



that connect the airport to the rest of Peninsula Malaysia. An express rail link connects KLIA to the city in only 28 minutes and other forms of public transport, including buses, taxis and limousines are readily available. As modern as it sounds, KLIA still strives to create a homely airport with a serene environment.



ATC Tower East

Since its inauguration in year 1998, KLIA has won numerous awards from international organizations, and is at the heart of Malaysia Airports mission to become a leader in the creation of airport cities. Combined with klia2, which opened in 2014, KLIA will be the Next Generation Hub, in the heart of Asean – a geographical zone of some 620 million people all within flying times of between four and five hours. Together, KLIA and klia2 offer long and short-haul capability with facilities that integrate both full-service and low-cost carrier operations. With a land bank measuring 10km by 10km, there is also ample room for expansion and space for a fourth runway.

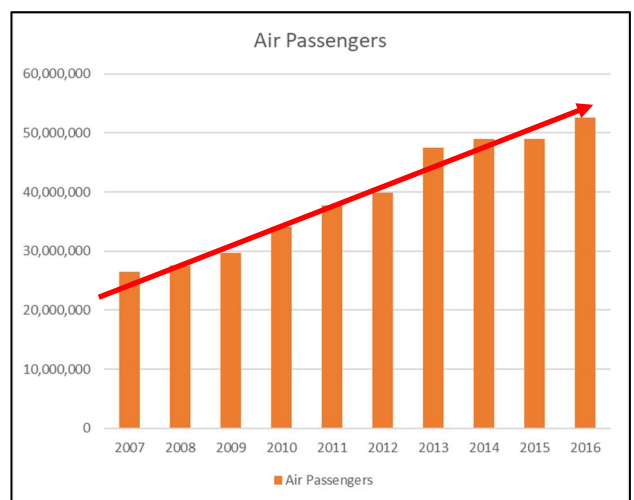
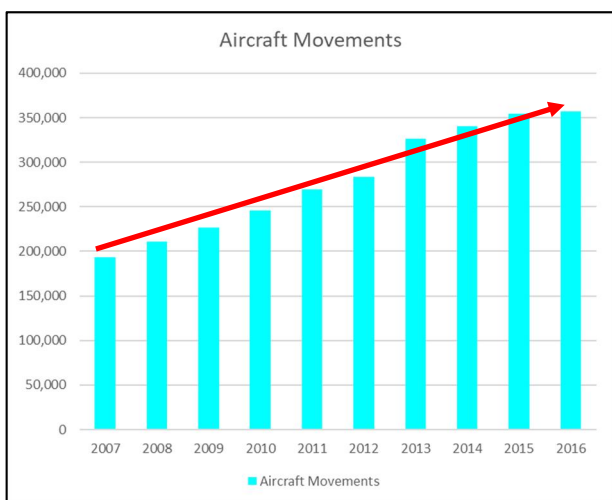
## Air Transport Statistics

### (1) Aircraft Movements

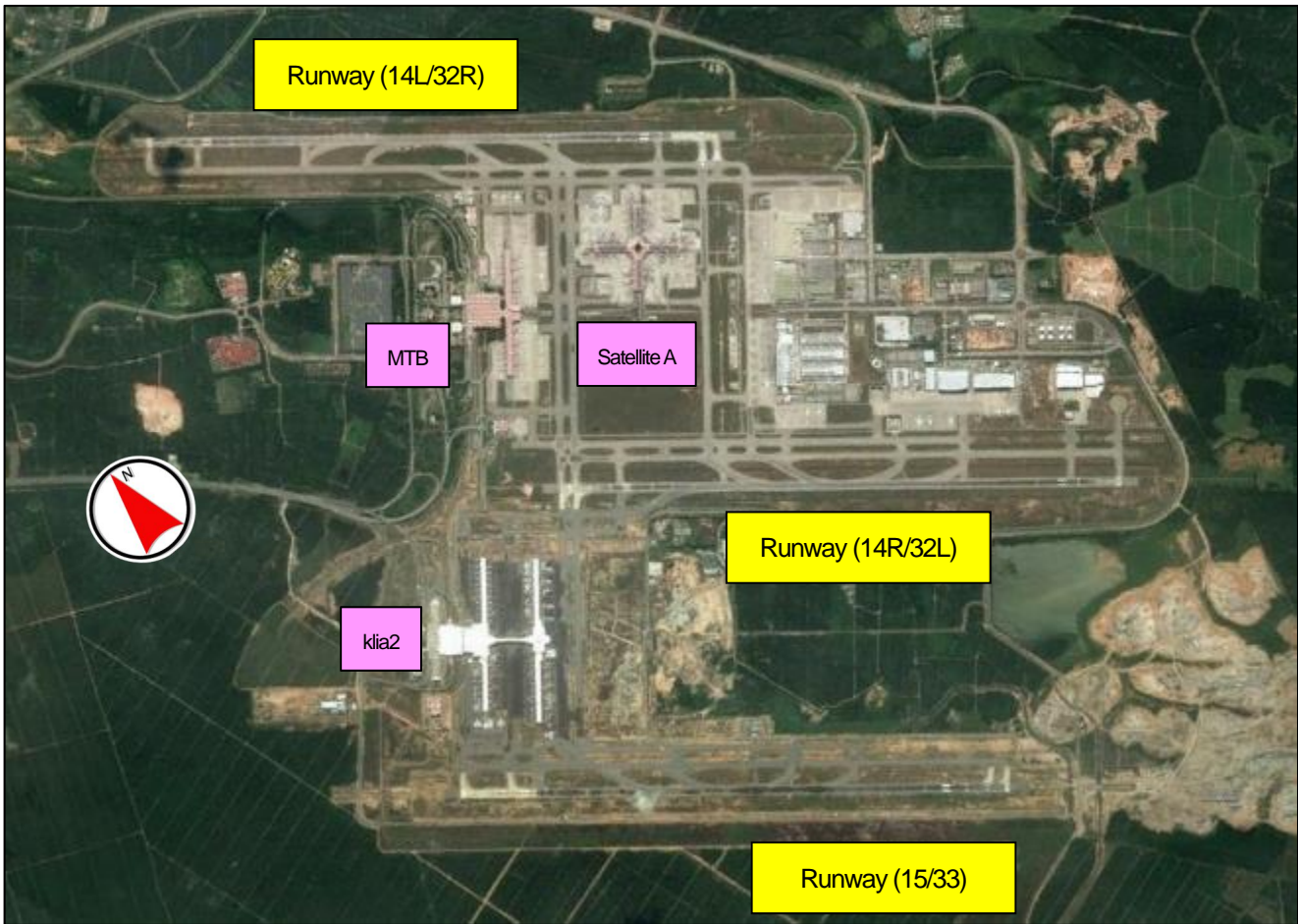
| Year               | 2007    | 2008    | 2009    | 2010    | 2011    | 2012    | 2013    | 2014    | 2015    | 2016    |
|--------------------|---------|---------|---------|---------|---------|---------|---------|---------|---------|---------|
| Aircraft Movements | 193,710 | 211,228 | 226,751 | 245,650 | 269,509 | 283,352 | 326,678 | 340,821 | 354,519 | 356,614 |

### (2) Air Passengers

| Year           | 2007       | 2008       | 2009       | 2010       | 2011       | 2012       | 2013       | 2014       | 2015       | 2016       |
|----------------|------------|------------|------------|------------|------------|------------|------------|------------|------------|------------|
| Air Passengers | 26,453,379 | 27,529,355 | 29,682,093 | 34,087,636 | 37,704,510 | 39,887,866 | 47,498,157 | 48,930,409 | 48,938,424 | 52,643,511 |



## Airport Infrastructure



The airport's site spans 100km<sup>2</sup> of former agricultural land and is one of the world's largest airport sites. Kuala Lumpur International Airport (KLIA) has three parallel runways (14L/32R), (14R/32L), (15/33), a first in the region. The aircraft movements on these runways are monitored by two Air Traffic Control (ATC) Towers; Tower East, and Tower West given the span of the airport. ATC Tower West standing at 133.8m is currently the tallest ATC tower in the world. The current three runway system is capable of handling 84 movements per hour and is expected to increase to 108 movements per hour once upgrading of the Kuala Lumpur Flight Information Region (FIR) is completed in 2019. These runways operate on different departure/arrival modes according to the air traffic requirements.



## Passenger Terminals

The airport is part of the KLIA Aeropolis and is made up of two main terminals; the original Main Terminal Building (MTB) and the new terminal 2, or also known as klia2. The airport's Main Terminal Building is designed with an emphasis of natural lighting within the airport complex. Spanning 38.4m along a grid pattern allowing for future expansions, the abstract symbolic architecture encompasses the Islamic geometry and cutting edge technology

with the tropical rainforest in mind.

### Main Terminal Building (MTB)

The KLIA Main Terminal Building (MTB) is located in between the two runways of (14L/32R) and (14R/32L). The floor area of the terminal covers 390,000m<sup>2</sup> and the building consists of 39 square roof units, which enables future expansion of the building. There are total of 216 check-in counters, located in 6 different islands, identified by the letters A – M (excluding I). Multi check-in services are available, designed for the use of all passengers arriving, departing or in transit. Self check-in facilities are available in this airport since 2007 and KLM was the first airline to use the Common-use self-service kiosks.



The contact pier is an extension of the main terminal building with gates marked with prefix A and B for domestic departures, G and H for international flights.



### Satellite A



The 176,000m<sup>2</sup> satellite building accommodates international flights departing and arriving at KLIA. Passengers can travel to the satellite building via the Aero train or bus services and vice versa. There is a wide array of duty-free shops and prestige brand boutiques in the satellite building. A number of restaurants and international airlines' lounges are available as well as an Airside Transit Hotel.

Within the terminal, wireless internet (Wi-Fi) is provided free of charge. The terminal also has prayer rooms, showers and massage service. Various lounge areas are provided, some including children's play areas and movie lounge, broadcasting movie and sport channels. The terminal also features a natural rainforest in the middle of the terminal, exhibiting the Malaysian rainforests.



klia2



Built at approximately RM4 Billion, it is the largest terminal optimized for low cost carriers in response to the exponential growth of low cost travel in the region and any new carrier interested to venture into KUL as a destination. It was built to replace the previous Low Cost Carrier Terminal (LCCT) klia2 started its operations on 2 May 2014 and all flight operations at LCCT were moved to klia2 by 9 May 2014.

As part of its development, a third runway (15/33) and a new air traffic control tower (Tower West) were built to support its operation. klia2 has an initial capacity of 45 million passenger per year. The terminal has a built-up area of 257,845m<sup>2</sup> with 68 departure gates, 10 remote stands, 80 aerobridges, includes a retail space of 35,000m<sup>2</sup> to accommodate a total of 220 retail outlets. The main terminal building of klia2 is connected with its satellite piers with a skybridge, making it the first airport in Asia with such facility.





Check-in counters are divided into 8 rows located in 4 islands, each row identified by the letters S – Z. Boarding gates are located in 5 piers, indicated by the letters J and K for domestic flights, and L, P and Q for international flights. Piers J, K and L are connected directly to the main terminal building, while Piers P and Q are accessible via the skybridge. Piers K and L are physically the same pier and share the same gates, but with waiting lounges on different levels (Level 1A for K and Level 2 for L). For international flights, the access door from Pier K is sealed off, while for domestic flights, the access door from Pier L is sealed off instead.

**New Features in KUL**

**KUL VIP Access**

KUL VIP Access is a door-to-gate service, in partnership with our service partners KLIA Express, KLIA Premier Access (for KLIA) and Plaza Premium Lounge (for klia2). The service includes transportation, meet & greet, buggy service, fast track immigration & customs lane, dedicated check-in counter, premier lounge usage, shop & dine exclusive deals and escort to gate. It aims to provide seamless memorable airport experience to the passengers. Service is available for both International Arrival and Departure passengers.



**Landside Transfer Services**

Passengers with inter-connecting flights between KLIA and klia2 can now enjoy the new round-the-clock shuttle transfer services between the two terminals free of charge. The free 24/7 shuttle buses runs every 10 minutes. The waiting area at KLIA is located at Door 4, Level 1, and the waiting area at klia2 is located at Bay A10, Level 1, Transportation Hub, Gateway@klia2 mall.



Latest Events in KUL



On 19<sup>th</sup> November 2017, Malaysia Airports Holding Berhad (MAHB) has organized the 1<sup>st</sup> KUL Marathon 2017 to promote its Kuala Lumpur International Airport (KLIA) Aeropolis, and at the same time commemorate its 25<sup>th</sup> anniversary. The full marathon route is within the 10 x 10 km land bank that is under the management of Malaysia Airports. The marathon route has all the important landmarks such as KL International Airport, Air Traffic Control Tower, Sama-Sama Hotel, Runway 3,

Sepang International Circuit, Digital Free Trade Zone Park, Mitsui Outlet Park and the long-term carpark. The event received an overwhelming response with 2,912 participants registered to join the run, and MAHB plans to make it an annual event.





Introduction of our computer system




National Slot Coordination Malaysia (NSCM) uses the SCORE system for managing slots coordination.

Information of our office

|                |  |
|----------------|--|
| Organization   | National Slot Coordination Malaysia (NSCM)   |
| Address        | 4 <sup>th</sup> Floor, Airport Management Centre, KL International Airport, 64000 KLIA, Sepang, Selangor Darul Ehsan, Malaysia |
| Telephone      | +60-3-87763027   |
| FAX            | +60-3-87763474   |
| Email          | <a href="mailto:nscm@malaysiaairports.com.my">nscm@malaysiaairports.com.my</a>   |
| Business Hours | 8:30 – 17:30   |

## Introduction of our members

|   |  |
|---|--|
|  |  |
| Mohd Arif Jaafar  | Halim Omar   |
| Head Coordinator  | Alt. Head Coordinator  |

|  |  |   |
|--|--|---|
|  |  |  |
| Adli Azlil Che Afzar   | Pathmavathy Nathan   | Nurul Akmar Nutman  |
| Slot Coordinator   | Slot Coordinator   | Slot Coordinator  |

## From Chief Editor

I would like to express my sincere appreciation to Mr. Mohd Arif Jaafar for his wonderful contribution to Asian Breeze. I was surprised to know that KLIA is operating three parallel runways currently with 84 movements per hour which will be increased to 108 movements in 2019. What a sharp increase! There seems to be a strong competition going on in Malay Peninsula with Singapore.

It snowed a lot on 22 January in Tokyo which is a heavy snow in four years. The snow accumulated 13cm which caused lots of troubles not only to land transportation (road and rail) but also to air transportation. Many flights were cancelled at Narita and Haneda International Airports. The snow on 22 January still remains in Tokyo because Siberian cold front stays unusually long time around Japan. It is forecasted to snow again in Tokyo today. What a freezing winter!





Speaking of snow, I should not forget to announce that the 69<sup>th</sup> Sapporo Snow Festival will be held from 5 to 12 February in Sapporo, Hokkaido Prefecture. There will be lots of snow and ice sculptures imitating famous architectures, anime characters and animals. You should not miss it. You would be able to enjoy it if you come to Hokkaido right away. (H.T.)

